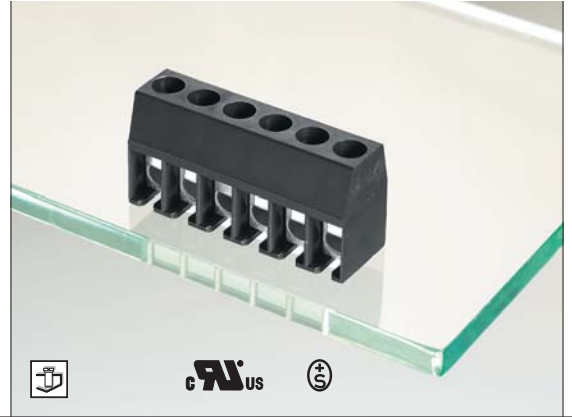


c **RIA** us



c **RIA** us



Type 271

Screw type terminal block, solderable, centerline 5 mm / 0.197 inches, horizontal wire entry, wire protector

Technical Data

RIA us V / A / AWG 300 / 15 / 26 - 14

Ⓢ 0.12 - 2.5 mm² 250 V / 4 kV / 15 A

Insulation co-ordination according to EN 60664-1

Clearance and creepage distances min. 3.3 mm

Insulating material class CTI 600

Overvoltage category III III II

Pollution degree 3 2 2

Rated voltage 250 630 630

Rated test voltage 2.5 6 4

Protection category according to IEC 60529 IP20

Tightening torque UL 4.4 lb-in max.

Min. insul. strip length 8 mm

Solder pin dimension 1 mm

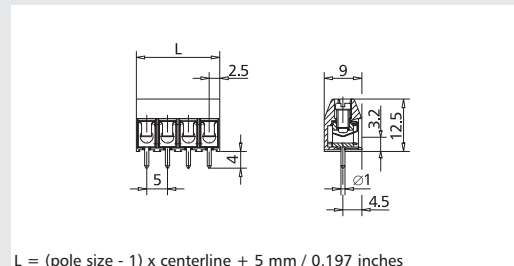
Recommended pc board hole dia. Ø 1.3 mm

Solder pin length 4 mm

Pole size 2 - 24

Colour black

Dimensions in mm 1 mm = 0.0394 in.



L = (pole size - 1) x centerline + 5 mm / 0.197 inches

Part numbers (P/N)

(informations: page 56)

Complete the part number by adding the pole size.

Type 271

centerline 5 mm / 0.197 inches

P/N 312711

	02	03	04	05	06	07	08
	09	10	11	12	13	14	15
	17	18	19	20	21	22	23
	24						

Type 271

centerline 10 mm / 0.394 inches

P/N 312712

	02	03	04	05	06	07	08
	09	10	11	12			

Standard pole sizes

Available on demand. Minimum order quantity 5000 pieces per item.

Type 003

Screw type terminal block, solderable, centerline 5 mm / 0.197 inches, horizontal wire entry, wire protector

Technical Data

RIA us V / A / AWG 300 / 20 / 22 - 12

Ⓢ 0.33 - 2.5 mm² 250 V / 4 kV / 16 A

Insulation co-ordination according to EN 60664-1

Clearance and creepage distances min. 3.9 mm

Insulating material class CTI 600

Overvoltage category III III II

Pollution degree 3 2 2

Rated voltage 250 630 630

Rated test voltage 2.5 6 4

Protection category according to IEC 60529 IP20

Tightening torque UL 4.4 lb-in max.

Min. insul. strip length 8 mm

Solder pin dimension 1 mm

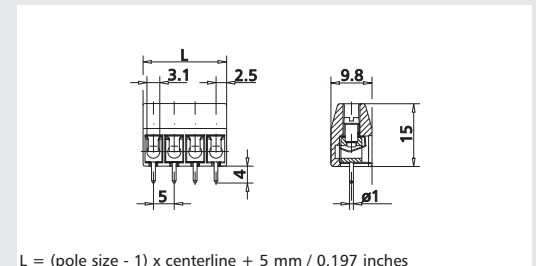
Recommended pc board hole dia. Ø 1.3 mm

Solder pin length 4 mm

Pole size 2 - 24

Colour black

Dimensions in mm 1 mm = 0.0394 in.



L = (pole size - 1) x centerline + 5 mm / 0.197 inches

Part numbers (P/N)

(informations: page 56)

Complete the part number by adding the pole size.

Type 003

centerline 5 mm / 0.197 inches

P/N 310031

	02	03	04	05	06	07	08
	09	10	11	12	13	14	15
	17	18	19	20	21	22	23
	24						

Type 003

centerline 10 mm / 0.394 inches

P/N 310032

	02	03	04	05	06	07	08
	09	10	11	12			

Standard pole sizes

Available on demand. Minimum order quantity 5000 pieces per item.